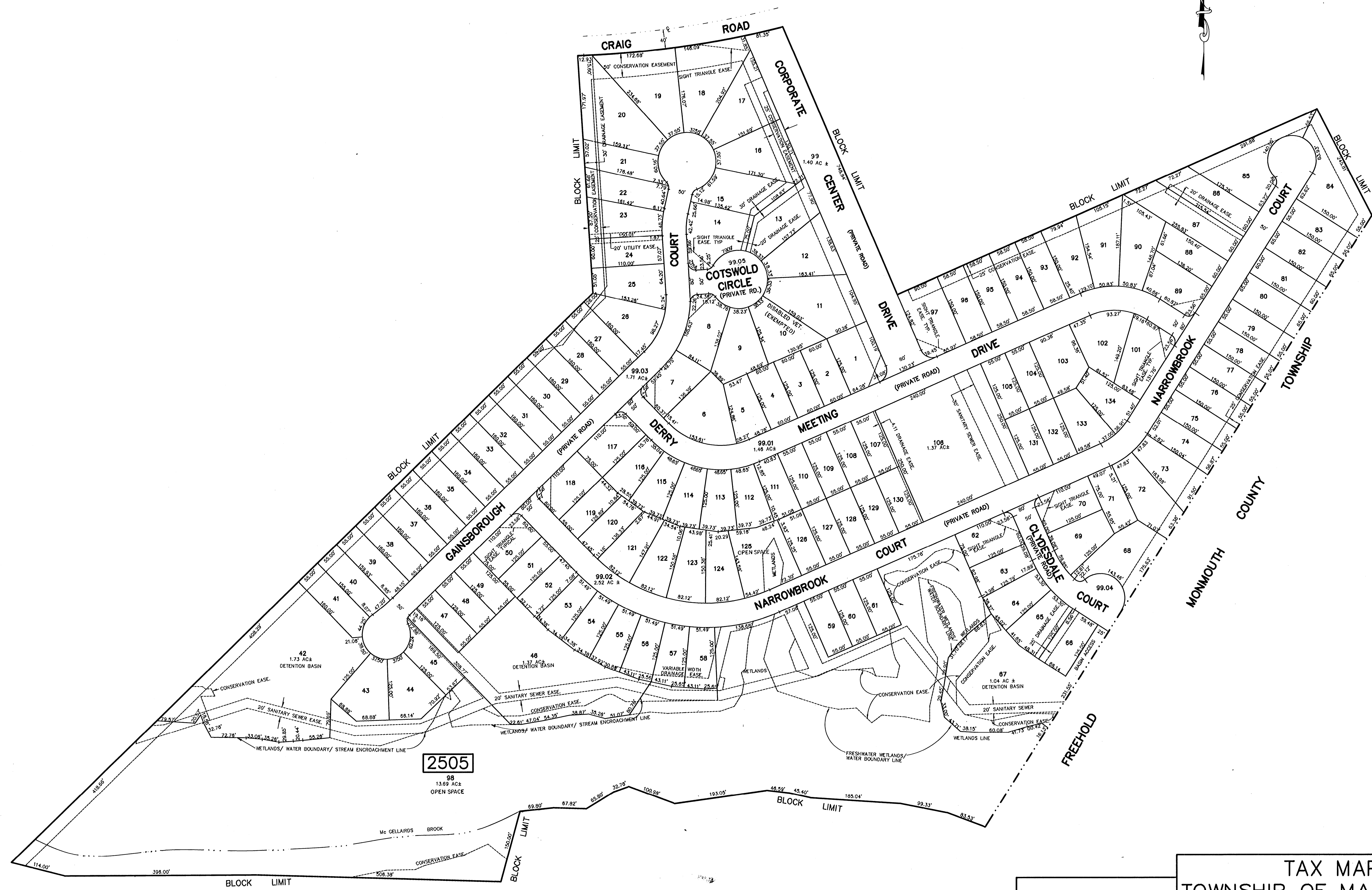


REVISED	DESCRIPTION	REV BY	CHK
11/2005	GEN. REVISIONS PER STATE REVIEW	GTL	

ADJOINS SHEET 15

ADJOINS SHEET 15, 15.02 & 15.03

ADJOINS SHEET 16



TAX MAP
 TOWNSHIP OF MANALAPAN
 MONMOUTH COUNTY, NEW JERSEY
 SCALE : 1" = 100'
 RAYMOND E. BORUP JR., P.L.S.
 CME ASSOCIATES
 3141 BORDENTOWN AVENUE, PARLIN
 NEW JERSEY, 08859

THIS SHEET HAS BEEN DRAWN USING COMPUTER AIDED DRAFTING / DESIGN (CAD / D)

ADJOINS SHEET 15

11/05 BIRDALL ENGINEERING, INC.
 WILLIAM SCHINDLER, JR., 0327188
 AS OF BY
 REVISED TO SHOW CONDITIONS