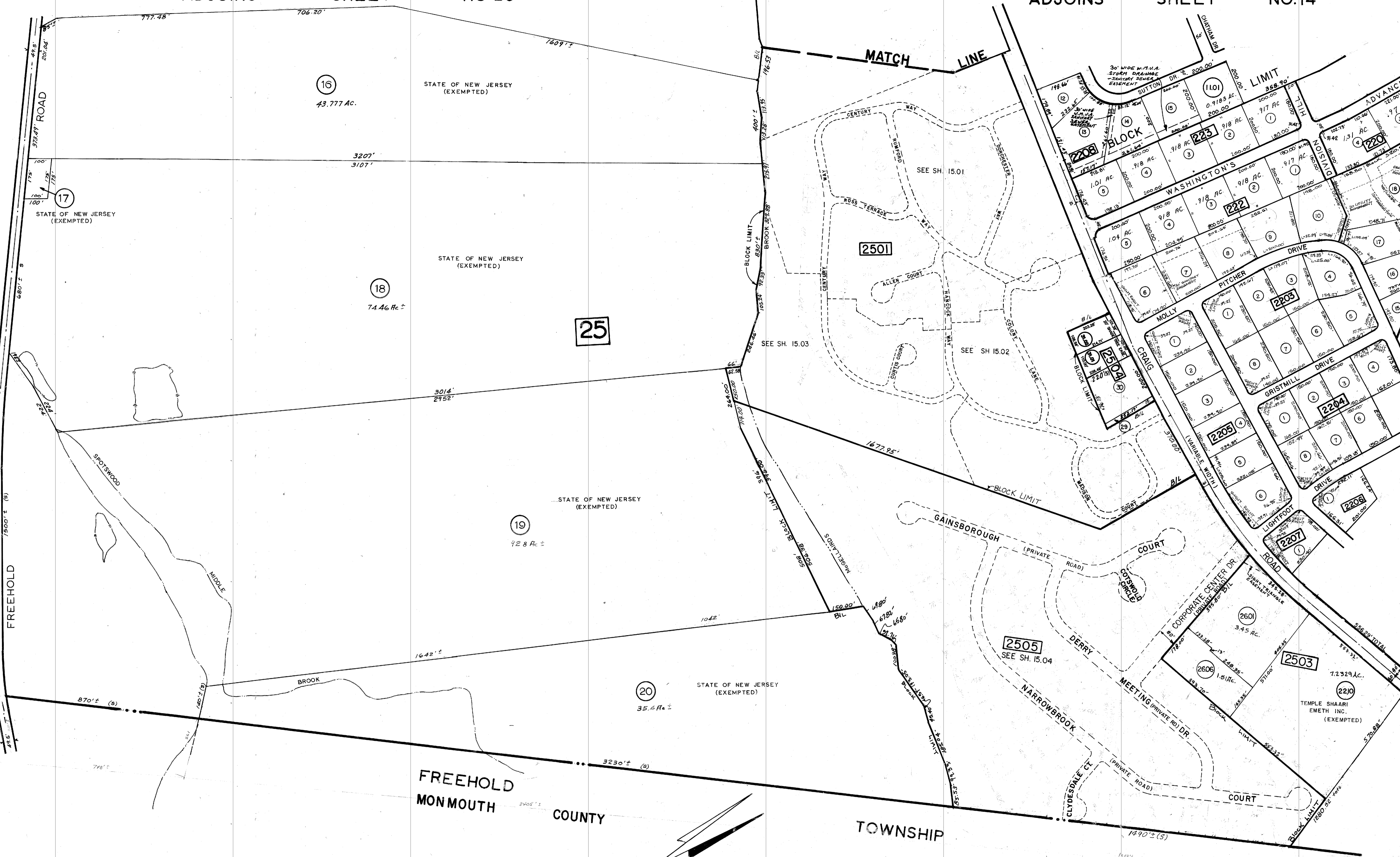


ADJOINS SHEET NO 20

ADJOINS SHEET NO.14



NO.	DATE	BY	DESCRIPTION	CHK. BY	REV. BY	CHK. BY
11/2005			GEN REVISIONS PER STATE REVIEW			
11/2005			REVISIONS TO PARCEL DATA			
11/2005			REVISIONS TO TAX MAP			
11/2005			REVISIONS TO LEGAL DESCRIPTIONS			
11/2005			REVISIONS TO LOT AREA CALCULATIONS			
11/2005			REVISIONS TO LOT PERIMETERS			
11/2005			REVISIONS TO LOT IDENTIFICATION			
11/2005			REVISIONS TO LOT ASSIGNMENTS			
11/2005			REVISIONS TO LOT COORDINATES			
11/2005			REVISIONS TO LOT SHADINGS			
11/2005			REVISIONS TO LOT LABELS			
11/2005			REVISIONS TO LOT DIMENSIONS			
11/2005			REVISIONS TO LOT PERCENTAGES			
11/2005			REVISIONS TO LOT VOLUMES			
11/2005			REVISIONS TO LOT WEIGHTS			
11/2005			REVISIONS TO LOT LENGTHS			
11/2005			REVISIONS TO LOT WIDTHS			
11/2005			REVISIONS TO LOT HEIGHTS			
11/2005			REVISIONS TO LOT DEPTHS			
11/2005			REVISIONS TO LOT VOLUMES			
11/2005			REVISIONS TO LOT WEIGHTS			
11/2005			REVISIONS TO LOT LENGTHS			
11/2005			REVISIONS TO LOT WIDTHS			
11/2005			REVISIONS TO LOT HEIGHTS			
11/2005			REVISIONS TO LOT DEPTHS			
11/2005			REVISIONS TO LOT VOLUMES			
11/2005			REVISIONS TO LOT WEIGHTS			
11/2005			REVISIONS TO LOT LENGTHS			
11/2005			REVISIONS TO LOT WIDTHS			
11/2005			REVISIONS TO LOT HEIGHTS			
11/2005			REVISIONS TO LOT DEPTHS			

ADJOINS SHEET NO. 21

ADJOINS SHEET NO. 16

TAX MAP
TOWNSHIP OF MANALAPAN
 MONMOUTH COUNTY NEW JERSEY
 SCALE 1"=200' MARCH 1960

ORIGINAL BY: **EDWARD A. BONUS** - L.S. LIC. NO. 8317
 REVISIONS BY: **JOHN ALLGAIR** - TOWNSHIP ENGINEER
 C.M.E. ASSOCIATES
 R.E.L.S.N.J. LIC. NO. 12012

NEW JERSEY DEPARTMENT OF THE TREASURY
 DIVISION OF TAXATION
 ENGINEERING & PAIDROLL TAX BUREAU
 APPROVED AS A TAX MAP PURSUANT TO THE PROVISIONS OF CHAPTER 175, LAWS OF 1913, ETC., FOR THE DIRECTOR, DIVISION OF TAXATION.
 BY: *C.E. Bonnes*
 STATE SUPERVISOR
 LATE JUN 8 1961 SERIAL NO. 320

11/2007 CME ASSOCIATES
 M.J. MCGURL 38338
 11/2005 BIRDSALL ENGINEERING, INC.
 WILLIAM SCHINDLER, JR. GS27188
 AS OF BY
 REVISED TO SHOW CONDITIONS

