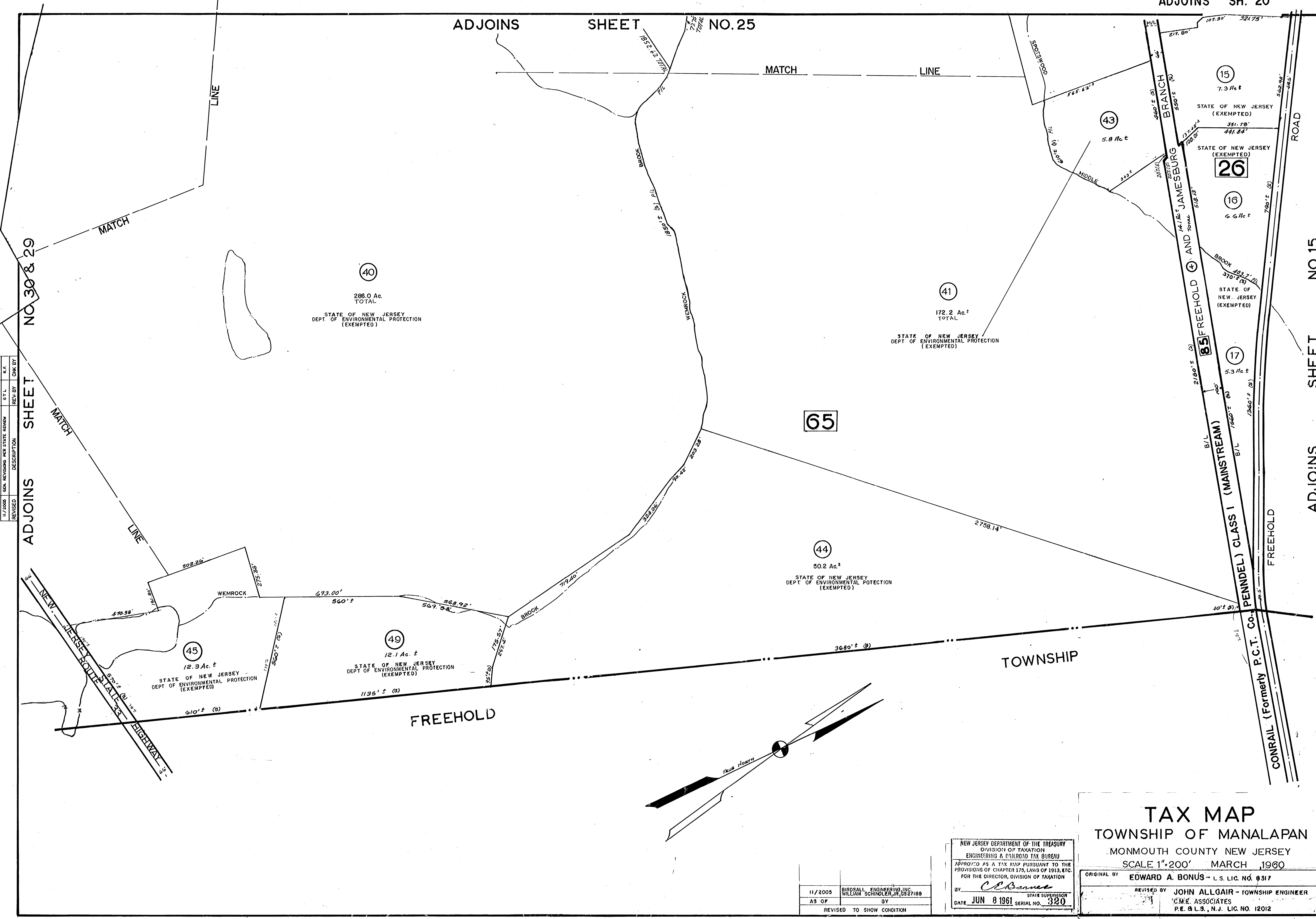


ADJOINS SHEET NO. 30 & 29

ADJOINS SHEET NO. 15

11/2005	GEN. REVISIONS PER STATE REVIEW	Q.T.L.	R.F.
	DESCRIPTION	REV. BY	CHK. BY



TOWNSHIP

FREEHOLD

TAX MAP
TOWNSHIP OF MANALAPAN

MONMOUTH COUNTY NEW JERSEY
 SCALE 1"=200' MARCH 1960

NEW JERSEY DEPARTMENT OF THE TREASURY
 DIVISION OF TAXATION
 ENGINEERING & RAILROAD TAX BUREAU
 APPROVED AS A TAX MAP PURSUANT TO THE
 PROVISIONS OF CHAPTER 175, LAWS OF 1913, ETC.
 FOR THE DIRECTOR, DIVISION OF TAXATION

ORIGINAL BY EDWARD A. BONUS - L.S. LIC. NO. 9317
 REVISED BY JOHN ALLGAIR - TOWNSHIP ENGINEER
 C.M.E. ASSOCIATES
 P.E. & L.S., N.J. LIC. NO. 12012

11/2005 BIRDALL ENGINEERING INC.
 AS OF WILLIAM SCHINDLER, JR. 0527189
 BY
 REVISED TO SHOW CONDITION