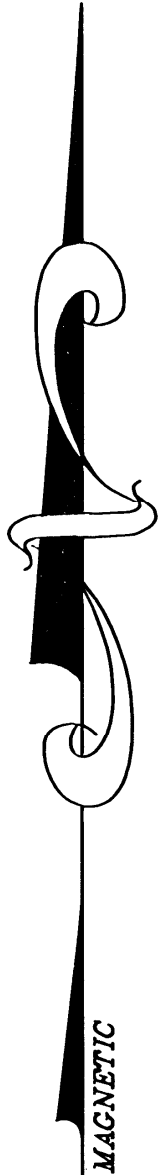
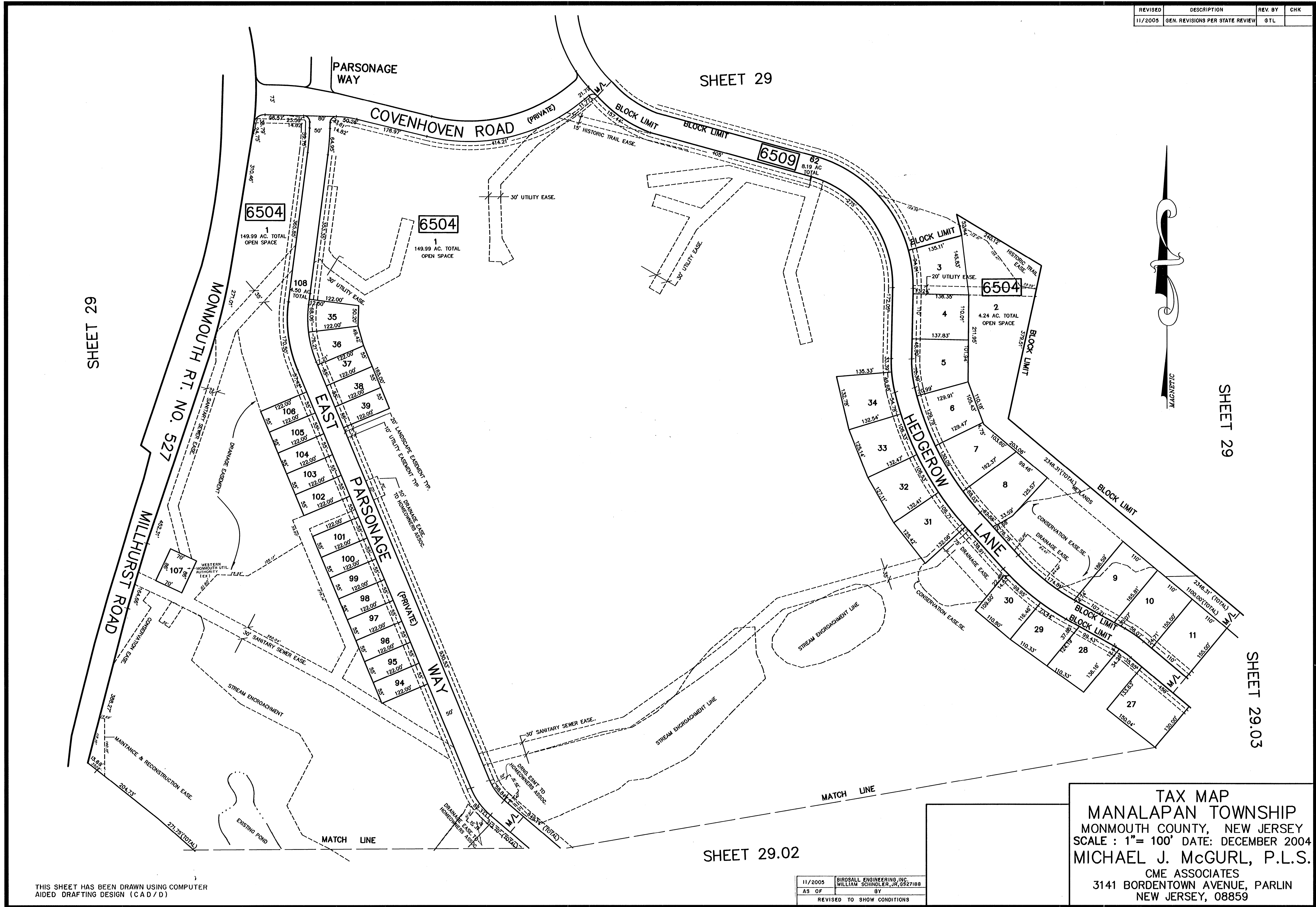


REVISED	DESCRIPTION	REV. BY	CHK
11/2005	GEN. REVISIONS PER STATE REVIEW	GTL	



SHEET 29

SHEET 29

SHEET 29

SHEET 29.03

SHEET 29.02

TAX MAP
 MANALAPAN TOWNSHIP
 MONMOUTH COUNTY, NEW JERSEY
 SCALE : 1"= 100' DATE: DECEMBER 2004
 MICHAEL J. MCGURL, P.L.S.
 CME ASSOCIATES
 3141 BORDENTOWN AVENUE, PARLIN
 NEW JERSEY, 08859

THIS SHEET HAS BEEN DRAWN USING COMPUTER
 AIDED DRAFTING DESIGN (C A D / D)

11/2005	BIRDSELL ENGINEERING INC.
AS OF	WILLIAM SCHINDLER, JR., Q327188
	BY
REVISED TO SHOW CONDITIONS	