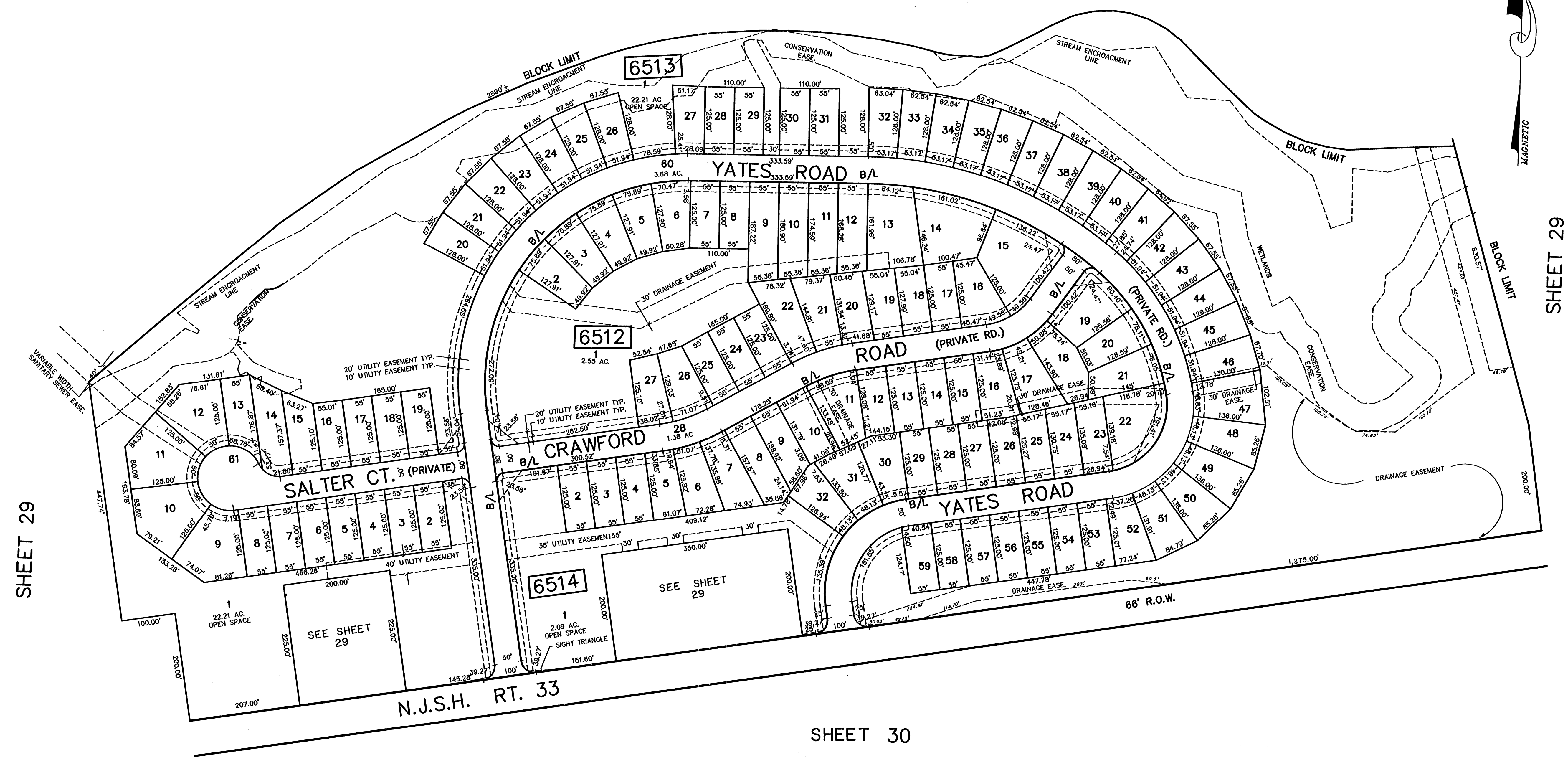
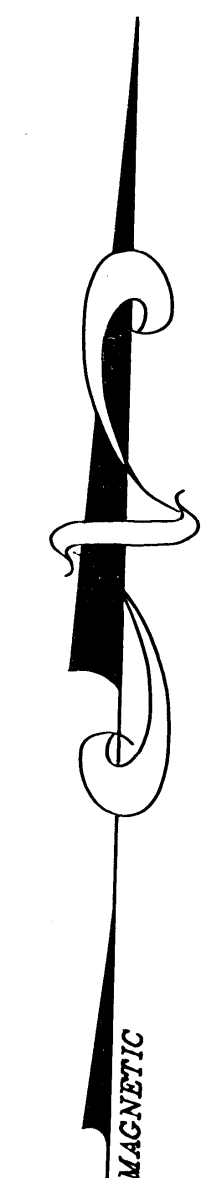


REVISED	DESCRIPTION	REV BY	GKD.
11/2005	GEN. REVISIONS PER STATE REVIEW	GTL	

SHEET 29.03



SHEET 29

SHEET 29

SHEET 30

TAX MAP
 MANALAPAN TOWNSHIP
 MONMOUTH COUNTY, NEW JERSEY
 SCALE :1"= 100' DATE: DECEMBER 2004
 MICHAEL J. McGURL, P.L.S.
 CME ASSOCIATES
 3141 BORDENTOWN AVENUE, PARLIN
 NEW JERSEY, 08859

THIS SHEET HAS BEEN DRAWN USING COMPUTER
 AIDED DRAFTING/ DESIGN (CAD/D)

11/2005	BIROSALL ENGINEERING, INC. WILLIAM SCHINDLER, JR., BS 27188
AS OF	BY
REVISED TO SHOW CONDITIONS	