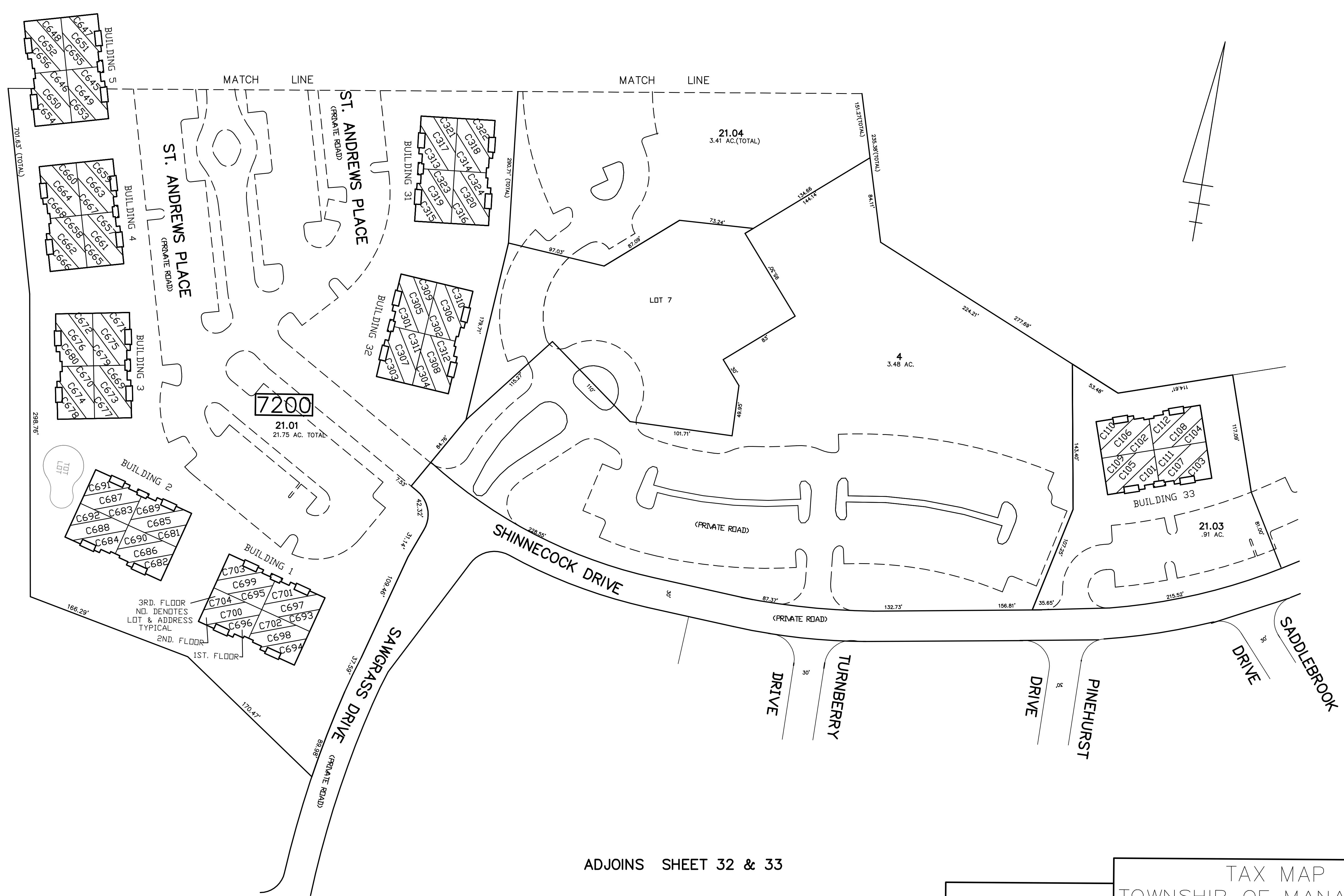


ADJOINS SHEET 32.01

REVISED DESCRIPTION  
REV. BY CHK. BY

ADJOINS SHEET 32 & 33

ADJOINS SHEET 32 & 33



ADJOINS SHEET 32 & 33

TAX MAP  
 TOWNSHIP OF MANALAPAN  
 MONMOUTH COUNTY, NEW JERSEY  
 SCALE : 1" = 50'  
 RAYMOND E. BORUP JR., P.L.S.  
 CME ASSOCIATES  
 3141 BORDENTOWN AVENUE, PARLIN  
 NEW JERSEY, 08859