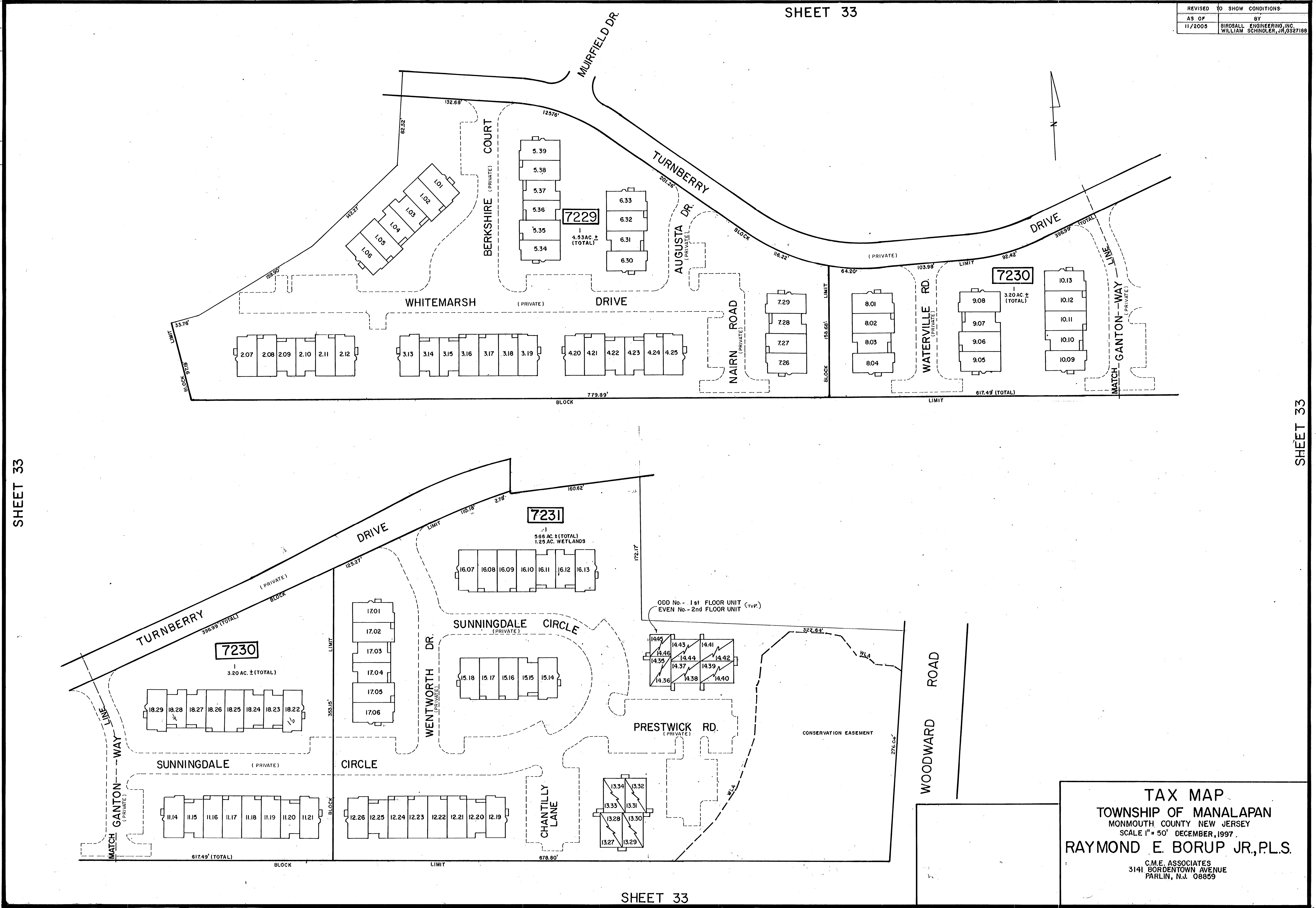


REVISED	TO SHOW CONDITIONS
AS OF	BY
11/2005	BIROBALL ENGINEERING, INC. WILLIAM SCHINDLER, JR. 0927189

11/2005 10th REVISIONS PER STATE REVIEW
 C.T.L. R.F.
 REV. BY CHK. BY
 DESCRIPTION

SHEET 33

SHEET 33



TAX MAP
 TOWNSHIP OF MANALAPAN
 MONMOUTH COUNTY NEW JERSEY
 SCALE 1" = 50' DECEMBER, 1997.
RAYMOND E. BORUP JR., P.L.S.
 C.M.E. ASSOCIATES
 3141 BORDENTOWN AVENUE
 PARLIN, N.J. 08859