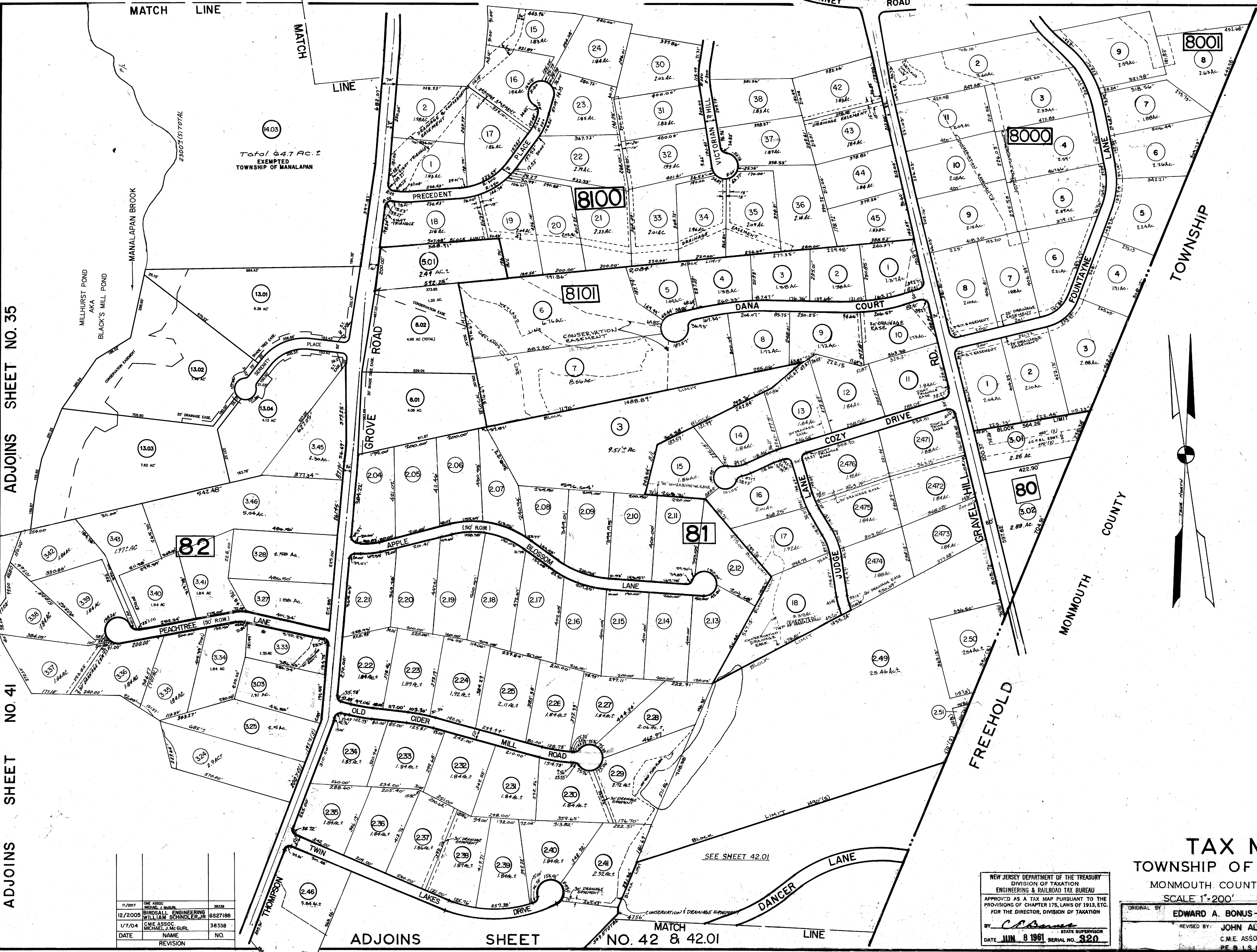


DATE	REVISION	DESCRIPTION	BY	CHK BY
11/2017	REVISED	DESCRIPTION	RR	CHK BY
10/27/17	REVISED	DESCRIPTION	RR	CHK BY
11/2017	REVISED	DESCRIPTION	RR	CHK BY



ADJOINS SHEET NO. 35

ADJOINS SHEET NO. 41

ADJOINS SHEET NO. 42 & 42.01

DATE	REVISION	NAME	NO.
11/2017	REVISED	DESCRIPTION	RR
12/2008	REVISED	DESCRIPTION	RR
1/7/04	REVISED	DESCRIPTION	RR

**TAX MAP**  
**TOWNSHIP OF MANALAPAN**  
 MONMOUTH COUNTY NEW JERSEY  
 SCALE 1"=200' MARCH 1960

NEW JERSEY DEPARTMENT OF THE TREASURY  
 DIVISION OF TAXATION  
 ENGINEERING & RAILROAD TAX BUREAU  
 APPROVED AS A TAX MAP PURSUANT TO THE  
 PROVISIONS OF CHAPTER 175, LAWS OF 1913, ETC.  
 FOR THE DIRECTOR, DIVISION OF TAXATION  
 BY: *C.E. Associates*  
 DATE: JUN 8 1961 SERIAL NO. 320

ORIGINAL BY: EDWARD A. BONUS - L.S. LIC. NO. 8317  
 REVISED BY: JOHN ALLGAIN - TOWNSHIP ENGINEER  
 C.M.E. ASSOCIATES  
 PE & L.S. N.J. LIC. NO. 12012

