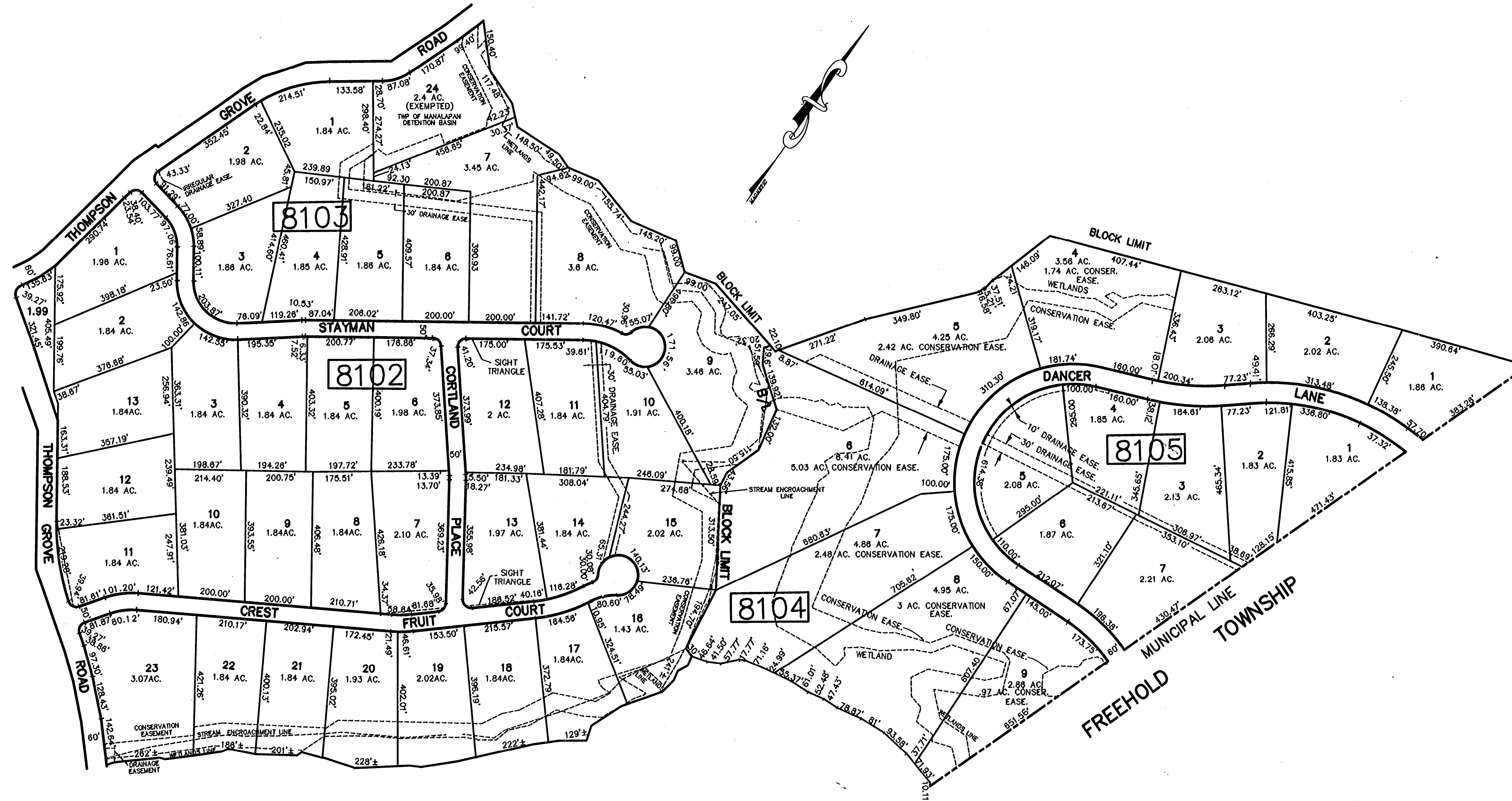


11/2005	WILLIAM SCHINDLER, JR. 0527188	G.T.L.	R.F.
10/2003	PLK 81 LOT6 SUBDIVISION	R.R.	
	DANCER FARM	REV. BY	CHK. BY
		DESCRIPTION	
		REVISED	

SHEET 41

SHEET 42



SHEET 36 & 42

SHEET 42

THIS SHEET HAS BEEN DRAWN USING
COMPUTER AIDED DRAFTING DESIGN (CAD/D)

11/2005	BIRDALL ENGINEERING, INC.
AS OF	WILLIAM SCHINDLER, JR. 0527188
	BY
	REVISED TO SHOW CONDITIONS

TAX MAP
 MANALAPAN TOWNSHIP
 MONMOUTH COUNTY, NEW JERSEY
 SCALE : 1" = 200' DATE: NOV. 2001
 MICHAEL J. McGURL, P.L.S.
 CME ASSOCIATES
 3141 BORDENTOWN AVENUE, PARLIN
 NEW JERSEY, 08859