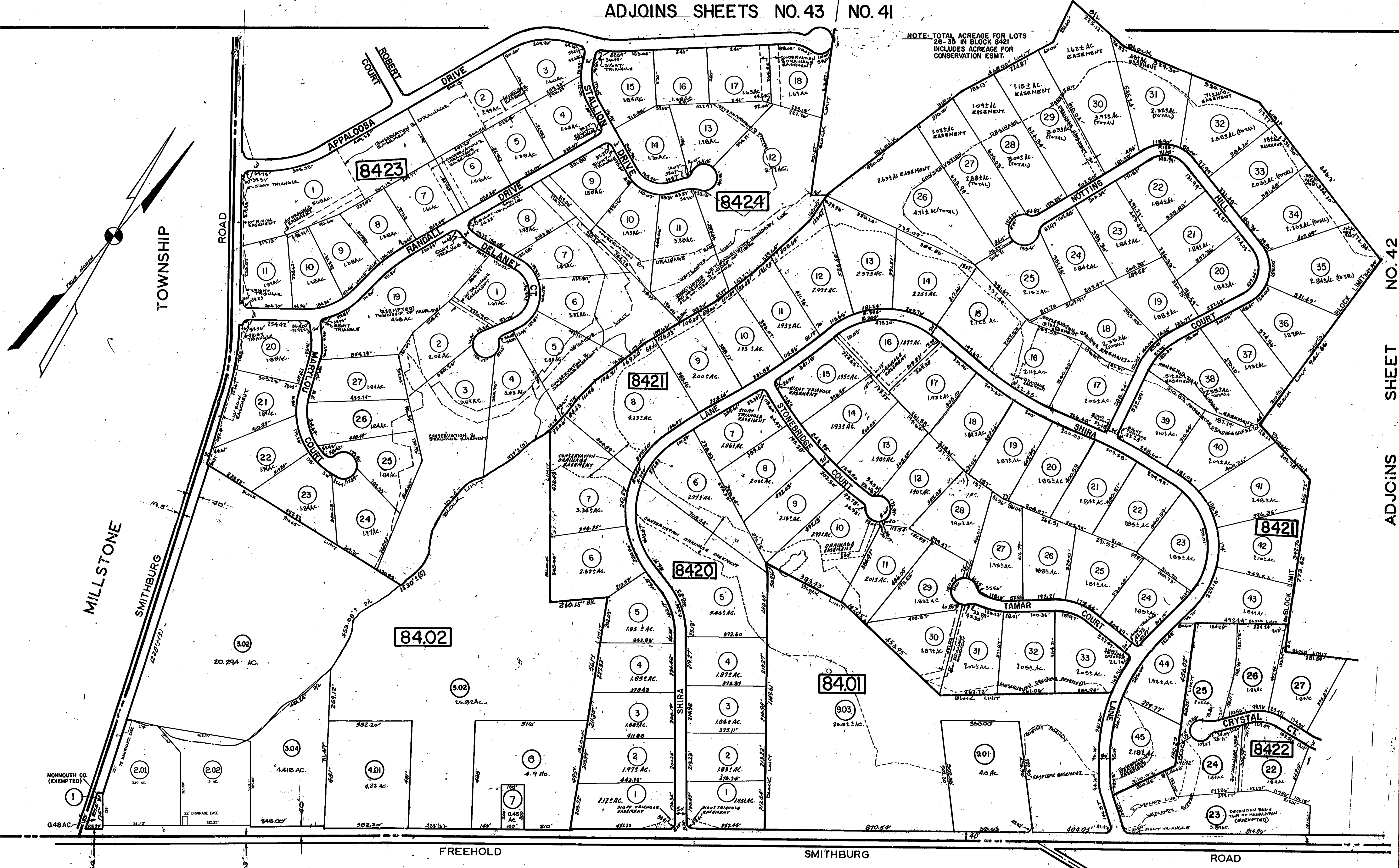


NO.	DATE	DESCRIPTION	BY
1	11/20/08	CON. REVISIONS PER STATE REVIEW	T.B.
2	10/27/08	PREPARED FOR COUNTY TAX MAP	T.B.
3	10/27/08	REVISED	T.B.
4	10/27/08	REVISED	T.B.
5	10/27/08	REVISED	T.B.
6	10/27/08	REVISED	T.B.
7	10/27/08	REVISED	T.B.
8	10/27/08	REVISED	T.B.
9	10/27/08	REVISED	T.B.
10	10/27/08	REVISED	T.B.
11	10/27/08	REVISED	T.B.
12	10/27/08	REVISED	T.B.
13	10/27/08	REVISED	T.B.
14	10/27/08	REVISED	T.B.
15	10/27/08	REVISED	T.B.
16	10/27/08	REVISED	T.B.
17	10/27/08	REVISED	T.B.
18	10/27/08	REVISED	T.B.
19	10/27/08	REVISED	T.B.
20	10/27/08	REVISED	T.B.
21	10/27/08	REVISED	T.B.
22	10/27/08	REVISED	T.B.
23	10/27/08	REVISED	T.B.
24	10/27/08	REVISED	T.B.
25	10/27/08	REVISED	T.B.
26	10/27/08	REVISED	T.B.
27	10/27/08	REVISED	T.B.
28	10/27/08	REVISED	T.B.
29	10/27/08	REVISED	T.B.
30	10/27/08	REVISED	T.B.
31	10/27/08	REVISED	T.B.
32	10/27/08	REVISED	T.B.
33	10/27/08	REVISED	T.B.
34	10/27/08	REVISED	T.B.
35	10/27/08	REVISED	T.B.
36	10/27/08	REVISED	T.B.
37	10/27/08	REVISED	T.B.
38	10/27/08	REVISED	T.B.
39	10/27/08	REVISED	T.B.
40	10/27/08	REVISED	T.B.
41	10/27/08	REVISED	T.B.
42	10/27/08	REVISED	T.B.
43	10/27/08	REVISED	T.B.
44	10/27/08	REVISED	T.B.
45	10/27/08	REVISED	T.B.



NOTE: TOTAL ACREAGE FOR LOTS 26-36 IN BLOCK 842 INCLUDES ACREAGE FOR CONSERVATION ESMT.

ADJOINS SHEET NO. 42

MILLSTONE TOWNSHIP ROAD

MONMOUTH CO. (EXEMPTED)

FREEHOLD SMITHBURG ROAD

FREEHOLD TOWNSHIP

12/2019	CME ASSOC. PLS 38338
12/2018	BIROSALL ENGINEERING, INC. WILLIAM SCHINDLER, JR. 0827188
11/2008	CME ASSOC. PLS 38338
11/04	CME ASSOC. PLS 38338
1/00	CME ASSOC. PLS 38338
10/98	CME ASSOCIATES
8/98	RAYMOND E. BONUS JR. PLS 12803
AS OR	BY
REVISED TO SHOW CONDITIONS	

NEW JERSEY DEPARTMENT OF THE TREASURY
DIVISION OF TAXATION
ENGINEERING & RAILROAD TAX BUREAU
APPROVED AS A TAX MAP PURSUANT TO THE PROVISIONS OF CHAPTER 176, LAWS OF 1913, ETC. FOR THE DIRECTOR, DIVISION OF TAXATION
CBonus
DATE: JUN 8 1981 SERIAL NO. 286
STATE SUPERVISOR

TAX MAP
TOWNSHIP OF MANALAPAN
MONMOUTH COUNTY NEW JERSEY
SCALE 1"=200' MARCH, 1960
ORIGINAL BY EDWARD A. BONUS - L.S. LIC NO. 8317
REVISED BY JOHN ALLGAIR - TOWNSHIP ENGINEER
C.M.E. ASSOCIATES
P.E. & L.S. N.J. LIC NO. 12012