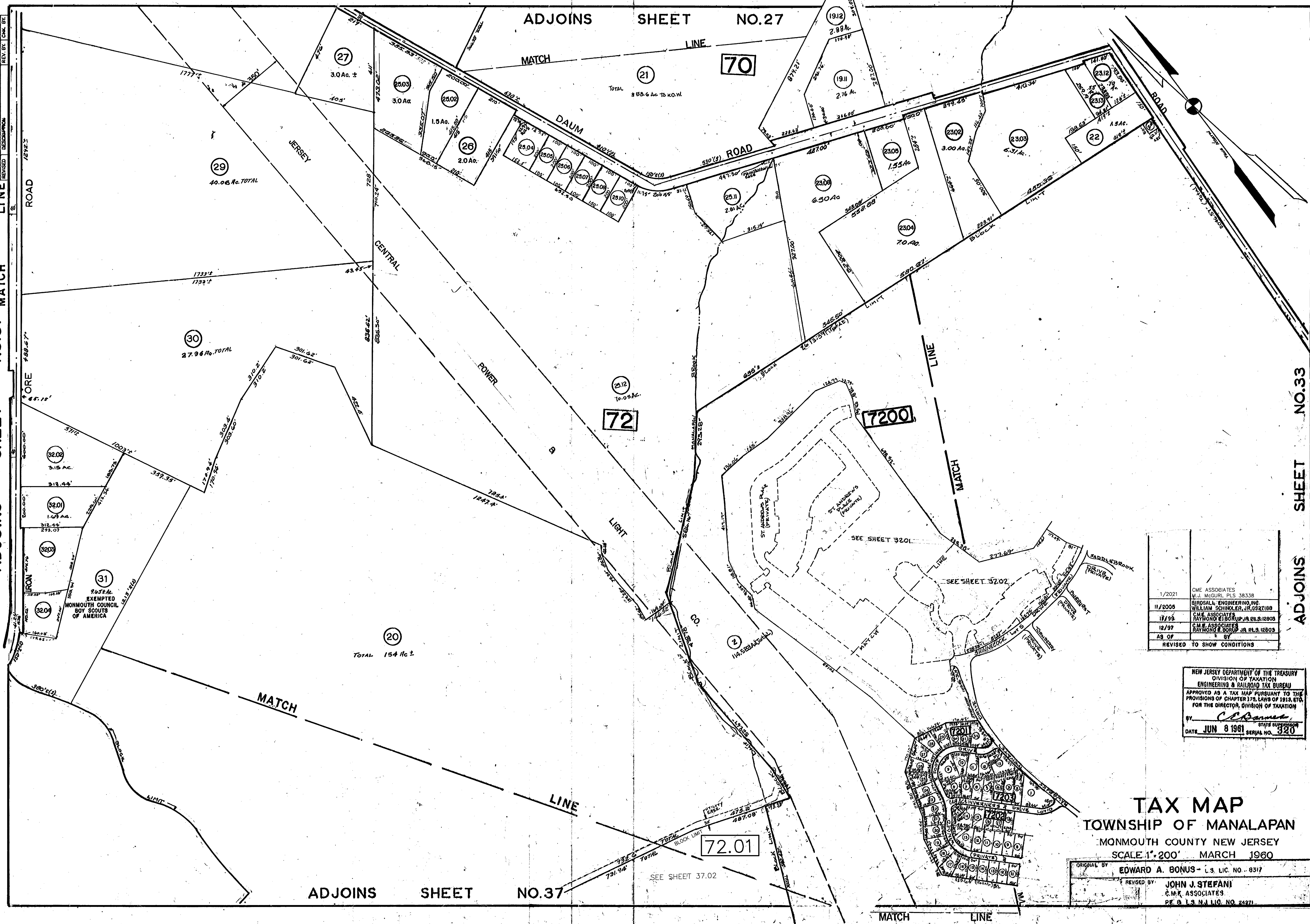


1/2021	RR	011	REV. BY: CHK. BY:
1/2005	RR	011	
17/95	RR	011	
12/97	RR	011	
AS OF	RR	011	
REVISED	RR	011	



1/2021	CME ASSOCIATES
11/2005	BIRDSELL ENGINEERING INC.
17/95	CME ASSOCIATES
12/97	CME ASSOCIATES
AS OF	BY
REVISED	TO SHOW CONDITIONS

NEW JERSEY DEPARTMENT OF THE TREASURY
 DIVISION OF TAXATION
 ENGINEERING & SURVEYING TAX BUREAU
 APPROVED AS A TAX MAP PURSUANT TO THE
 PROVISIONS OF CHAPTER 178, LAWS OF 1914, ET SEQ.
 FOR THE DIRECTOR, DIVISION OF TAXATION
 BY: *C. J. Bonus*
 DATE: JUN 8 1961 STATE SURVEYOR
 SERIAL NO. 320

TAX MAP
TOWNSHIP OF MANALAPAN
 MONMOUTH COUNTY NEW JERSEY
 SCALE 1"=200' MARCH 1960

ORIGINAL BY: EDWARD A. BONUS - L.S. LIC. NO. - 8317
 REVISED BY: JOHN J. STEFANI
 C.M.K. ASSOCIATES
 P.E. & L.S. N.J. LIC. NO. 24271

ADJOINS SHEET NO.33

ADJOINS SHEET NO.31

ADJOINS SHEET NO.37

ADJOINS SHEET NO.27