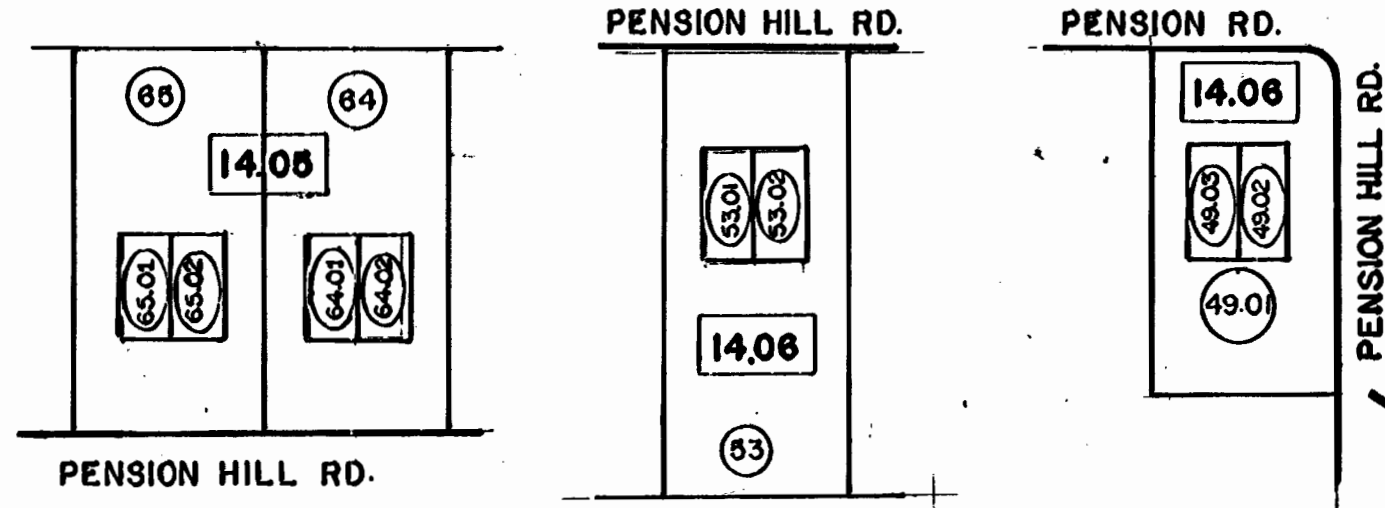
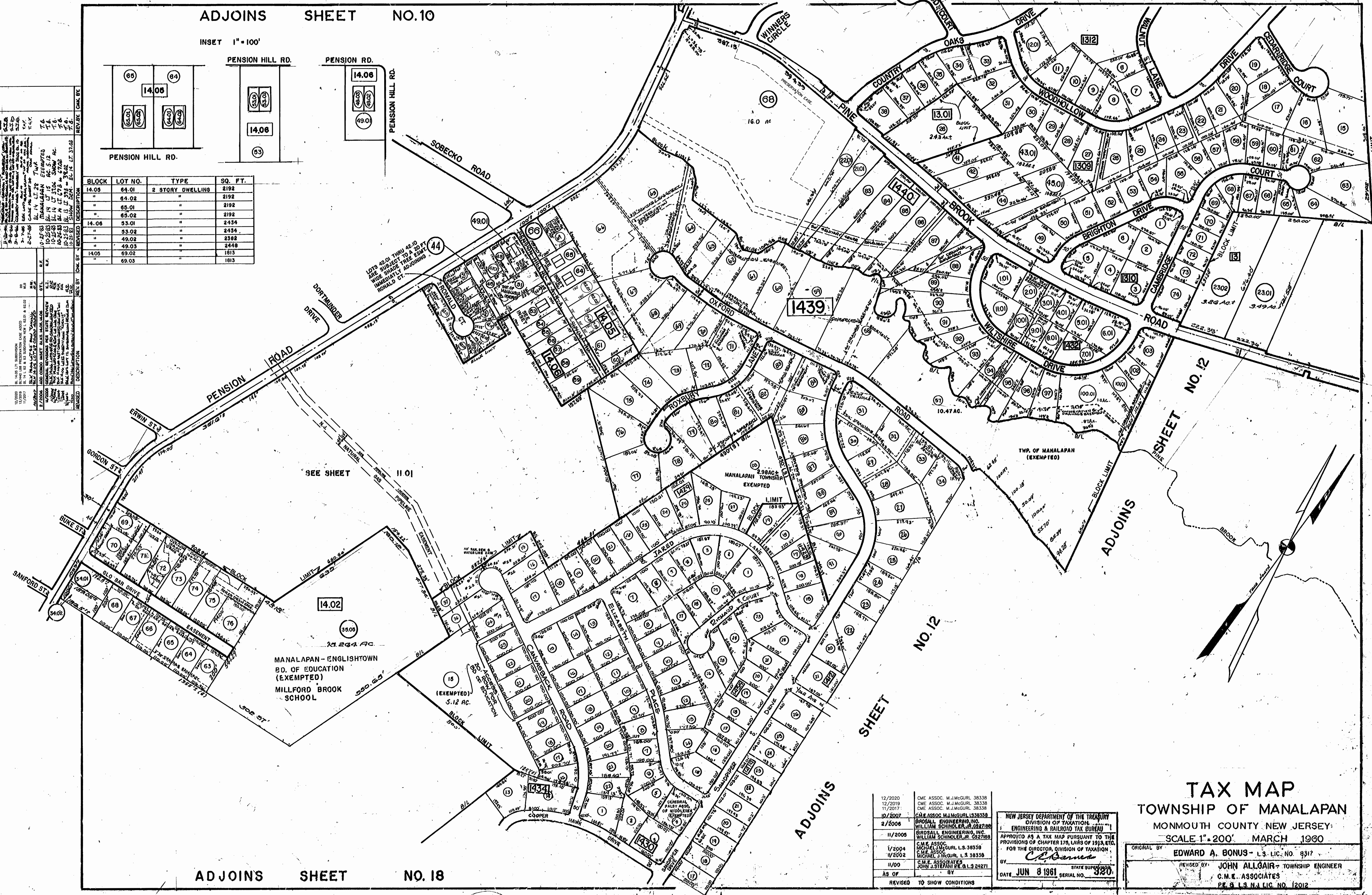


INSET 1" = 100'



BLOCK	LOT NO.	TYPE	SQ. FT.
14.05	64.01	2 STORY DWELLING	2192
"	64.02	"	2192
"	65.01	"	2192
"	65.02	"	2192
14.06	53.01	"	2434
"	53.02	"	2434
"	49.02	"	2392
"	49.03	"	2448
14.05	69.02	"	1813
"	69.03	"	1813

NO.	DATE	BY	DESCRIPTION
1	12/20/20	CME ASSOC. M.J.McGURL 38338	REVISION TO SHOW CONDITIONS
2	12/20/19	CME ASSOC. M.J.McGURL 38338	REVISION TO SHOW CONDITIONS
3	11/20/17	CME ASSOC. M.J.McGURL 38338	REVISION TO SHOW CONDITIONS
4	10/20/07	BROSALL ENGINEERING, INC. 38338	REVISION TO SHOW CONDITIONS
5	11/20/06	BROSALL ENGINEERING, INC. 38338	REVISION TO SHOW CONDITIONS
6	11/20/05	BROSALL ENGINEERING, INC. 38338	REVISION TO SHOW CONDITIONS
7	1/20/04	C.M.E. ASSOC. M.J.McGURL L.S. 38338	REVISION TO SHOW CONDITIONS
8	11/20/02	C.M.E. ASSOC. M.J.McGURL L.S. 38338	REVISION TO SHOW CONDITIONS
9	11/00	C.M.E. ASSOC. M.J.McGURL L.S. 38338	REVISION TO SHOW CONDITIONS
10	AS OF	JOHN J. STEVENS PE & L.S. 24271	REVISION TO SHOW CONDITIONS



ADJOINS SHEET NO. 12

ADJOINS SHEET NO. 12

ADJOINS SHEET NO. 6

12/20/20	CME ASSOC. M.J.McGURL 38338
12/20/19	CME ASSOC. M.J.McGURL 38338
11/20/17	CME ASSOC. M.J.McGURL 38338
10/20/07	C.M.E. ASSOC. M.J.McGURL L.S. 38338
11/20/06	BROSALL ENGINEERING, INC. 38338
11/20/05	BROSALL ENGINEERING, INC. 38338
1/20/04	C.M.E. ASSOC. M.J.McGURL L.S. 38338
11/20/02	C.M.E. ASSOC. M.J.McGURL L.S. 38338
11/00	C.M.E. ASSOC. M.J.McGURL L.S. 38338
AS OF	JOHN J. STEVENS PE & L.S. 24271
REVISED	TO SHOW CONDITIONS

NEW JERSEY DEPARTMENT OF THE TREASURY
 DIVISION OF TAXATION
 ENGINEERING & RAILROAD TAX BUREAU
 APPROVED AS A TAX MAP PURSUANT TO THE PROVISIONS OF CHAPTER 175, LAWS OF 1913, ETC.
 FOR THE DIRECTOR, DIVISION OF TAXATION
 BY: *C.E. Bonus*
 DATE JUN 8 1961 SERIAL NO. 320

TAX MAP
TOWNSHIP OF MANALAPAN
 MONMOUTH COUNTY NEW JERSEY
 SCALE 1" = 200' MARCH 1960

ORIGINAL BY: EDWARD A. BONUS - L.S. LIC. NO. 8317
 REVISED BY: JOHN ALLGAIER - TOWNSHIP ENGINEER
 C.M.E. ASSOCIATES
 PE & L.S. N.J. LIC. NO. 12012