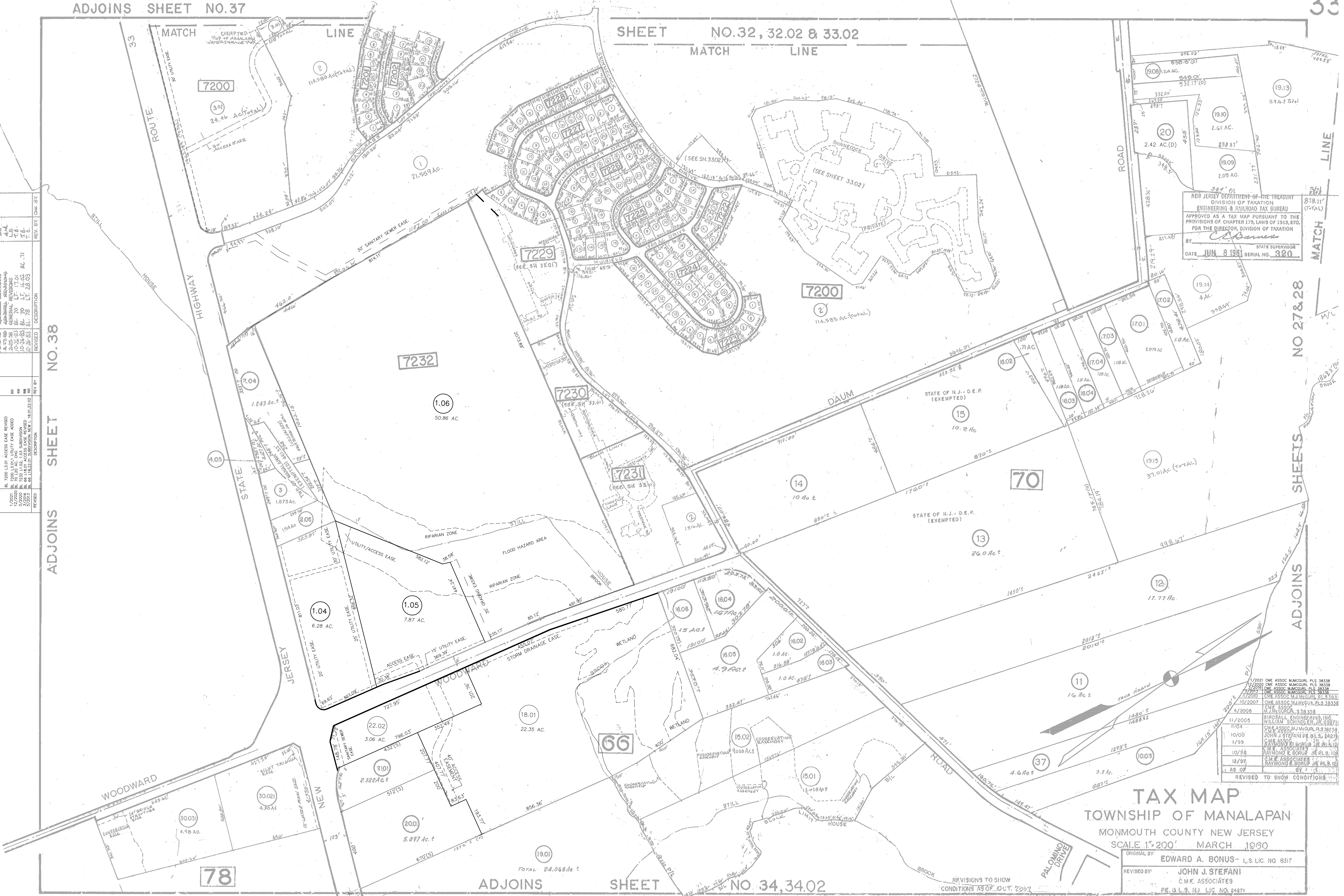


NO.	DATE	DESCRIPTION	BY	CHK.
1	11/2005	GENERAL REVISIONS PER STATE REVIEW	RR	RR
2	10/2006	GENERAL REVISIONS PER STATE REVIEW	RR	RR
3	10/2006	GENERAL REVISIONS PER STATE REVIEW	RR	RR
4	10/2006	GENERAL REVISIONS PER STATE REVIEW	RR	RR
5	10/2006	GENERAL REVISIONS PER STATE REVIEW	RR	RR
6	10/2006	GENERAL REVISIONS PER STATE REVIEW	RR	RR
7	10/2006	GENERAL REVISIONS PER STATE REVIEW	RR	RR
8	10/2006	GENERAL REVISIONS PER STATE REVIEW	RR	RR
9	10/2006	GENERAL REVISIONS PER STATE REVIEW	RR	RR
10	10/2006	GENERAL REVISIONS PER STATE REVIEW	RR	RR
11	10/2006	GENERAL REVISIONS PER STATE REVIEW	RR	RR
12	10/2006	GENERAL REVISIONS PER STATE REVIEW	RR	RR
13	10/2006	GENERAL REVISIONS PER STATE REVIEW	RR	RR
14	10/2006	GENERAL REVISIONS PER STATE REVIEW	RR	RR
15	10/2006	GENERAL REVISIONS PER STATE REVIEW	RR	RR
16	10/2006	GENERAL REVISIONS PER STATE REVIEW	RR	RR
17	10/2006	GENERAL REVISIONS PER STATE REVIEW	RR	RR
18	10/2006	GENERAL REVISIONS PER STATE REVIEW	RR	RR
19	10/2006	GENERAL REVISIONS PER STATE REVIEW	RR	RR
20	10/2006	GENERAL REVISIONS PER STATE REVIEW	RR	RR
21	10/2006	GENERAL REVISIONS PER STATE REVIEW	RR	RR
22	10/2006	GENERAL REVISIONS PER STATE REVIEW	RR	RR
23	10/2006	GENERAL REVISIONS PER STATE REVIEW	RR	RR
24	10/2006	GENERAL REVISIONS PER STATE REVIEW	RR	RR
25	10/2006	GENERAL REVISIONS PER STATE REVIEW	RR	RR
26	10/2006	GENERAL REVISIONS PER STATE REVIEW	RR	RR
27	10/2006	GENERAL REVISIONS PER STATE REVIEW	RR	RR
28	10/2006	GENERAL REVISIONS PER STATE REVIEW	RR	RR
29	10/2006	GENERAL REVISIONS PER STATE REVIEW	RR	RR
30	10/2006	GENERAL REVISIONS PER STATE REVIEW	RR	RR
31	10/2006	GENERAL REVISIONS PER STATE REVIEW	RR	RR
32	10/2006	GENERAL REVISIONS PER STATE REVIEW	RR	RR
33	10/2006	GENERAL REVISIONS PER STATE REVIEW	RR	RR
34	10/2006	GENERAL REVISIONS PER STATE REVIEW	RR	RR
35	10/2006	GENERAL REVISIONS PER STATE REVIEW	RR	RR
36	10/2006	GENERAL REVISIONS PER STATE REVIEW	RR	RR
37	10/2006	GENERAL REVISIONS PER STATE REVIEW	RR	RR
38	10/2006	GENERAL REVISIONS PER STATE REVIEW	RR	RR
39	10/2006	GENERAL REVISIONS PER STATE REVIEW	RR	RR
40	10/2006	GENERAL REVISIONS PER STATE REVIEW	RR	RR
41	10/2006	GENERAL REVISIONS PER STATE REVIEW	RR	RR
42	10/2006	GENERAL REVISIONS PER STATE REVIEW	RR	RR
43	10/2006	GENERAL REVISIONS PER STATE REVIEW	RR	RR
44	10/2006	GENERAL REVISIONS PER STATE REVIEW	RR	RR
45	10/2006	GENERAL REVISIONS PER STATE REVIEW	RR	RR
46	10/2006	GENERAL REVISIONS PER STATE REVIEW	RR	RR
47	10/2006	GENERAL REVISIONS PER STATE REVIEW	RR	RR
48	10/2006	GENERAL REVISIONS PER STATE REVIEW	RR	RR
49	10/2006	GENERAL REVISIONS PER STATE REVIEW	RR	RR
50	10/2006	GENERAL REVISIONS PER STATE REVIEW	RR	RR
51	10/2006	GENERAL REVISIONS PER STATE REVIEW	RR	RR
52	10/2006	GENERAL REVISIONS PER STATE REVIEW	RR	RR
53	10/2006	GENERAL REVISIONS PER STATE REVIEW	RR	RR
54	10/2006	GENERAL REVISIONS PER STATE REVIEW	RR	RR
55	10/2006	GENERAL REVISIONS PER STATE REVIEW	RR	RR
56	10/2006	GENERAL REVISIONS PER STATE REVIEW	RR	RR
57	10/2006	GENERAL REVISIONS PER STATE REVIEW	RR	RR
58	10/2006	GENERAL REVISIONS PER STATE REVIEW	RR	RR
59	10/2006	GENERAL REVISIONS PER STATE REVIEW	RR	RR
60	10/2006	GENERAL REVISIONS PER STATE REVIEW	RR	RR
61	10/2006	GENERAL REVISIONS PER STATE REVIEW	RR	RR
62	10/2006	GENERAL REVISIONS PER STATE REVIEW	RR	RR
63	10/2006	GENERAL REVISIONS PER STATE REVIEW	RR	RR
64	10/2006	GENERAL REVISIONS PER STATE REVIEW	RR	RR
65	10/2006	GENERAL REVISIONS PER STATE REVIEW	RR	RR
66	10/2006	GENERAL REVISIONS PER STATE REVIEW	RR	RR
67	10/2006	GENERAL REVISIONS PER STATE REVIEW	RR	RR
68	10/2006	GENERAL REVISIONS PER STATE REVIEW	RR	RR
69	10/2006	GENERAL REVISIONS PER STATE REVIEW	RR	RR
70	10/2006	GENERAL REVISIONS PER STATE REVIEW	RR	RR
71	10/2006	GENERAL REVISIONS PER STATE REVIEW	RR	RR
72	10/2006	GENERAL REVISIONS PER STATE REVIEW	RR	RR
73	10/2006	GENERAL REVISIONS PER STATE REVIEW	RR	RR
74	10/2006	GENERAL REVISIONS PER STATE REVIEW	RR	RR
75	10/2006	GENERAL REVISIONS PER STATE REVIEW	RR	RR
76	10/2006	GENERAL REVISIONS PER STATE REVIEW	RR	RR
77	10/2006	GENERAL REVISIONS PER STATE REVIEW	RR	RR
78	10/2006	GENERAL REVISIONS PER STATE REVIEW	RR	RR
79	10/2006	GENERAL REVISIONS PER STATE REVIEW	RR	RR
80	10/2006	GENERAL REVISIONS PER STATE REVIEW	RR	RR
81	10/2006	GENERAL REVISIONS PER STATE REVIEW	RR	RR
82	10/2006	GENERAL REVISIONS PER STATE REVIEW	RR	RR
83	10/2006	GENERAL REVISIONS PER STATE REVIEW	RR	RR
84	10/2006	GENERAL REVISIONS PER STATE REVIEW	RR	RR
85	10/2006	GENERAL REVISIONS PER STATE REVIEW	RR	RR
86	10/2006	GENERAL REVISIONS PER STATE REVIEW	RR	RR
87	10/2006	GENERAL REVISIONS PER STATE REVIEW	RR	RR
88	10/2006	GENERAL REVISIONS PER STATE REVIEW	RR	RR
89	10/2006	GENERAL REVISIONS PER STATE REVIEW	RR	RR
90	10/2006	GENERAL REVISIONS PER STATE REVIEW	RR	RR
91	10/2006	GENERAL REVISIONS PER STATE REVIEW	RR	RR
92	10/2006	GENERAL REVISIONS PER STATE REVIEW	RR	RR
93	10/2006	GENERAL REVISIONS PER STATE REVIEW	RR	RR
94	10/2006	GENERAL REVISIONS PER STATE REVIEW	RR	RR
95	10/2006	GENERAL REVISIONS PER STATE REVIEW	RR	RR
96	10/2006	GENERAL REVISIONS PER STATE REVIEW	RR	RR
97	10/2006	GENERAL REVISIONS PER STATE REVIEW	RR	RR
98	10/2006	GENERAL REVISIONS PER STATE REVIEW	RR	RR
99	10/2006	GENERAL REVISIONS PER STATE REVIEW	RR	RR
100	10/2006	GENERAL REVISIONS PER STATE REVIEW	RR	RR

ADJOINS SHEET NO.38

ADJOINS SHEETS NO 27&28



NEW JERSEY DEPARTMENT OF THE TREASURY
 DIVISION OF TAXATION
 ENGINEERING & RAILROAD TAX BUREAU
 APPROVED AS A TAX MAP PURSUANT TO THE
 PROVISIONS OF CHAPTER 175, LAWS OF 1919, ETC.,
 FOR THE DIRECTOR, DIVISION OF TAXATION
 BY: *Edward A. Bonus*
 DATE: JUN 8 1961 SERIAL NO. 320

DATE	DESCRIPTION	BY
1/2021	CME ASSOC M/M/CORP PLS 38338	
1/2020	CME ASSOC M/M/CORP PLS 38338	
1/2019	CME ASSOC M/M/CORP PLS 38338	
10/2007	CME ASSOC M/M/CORP PLS 38338	
4/2006	CME ASSOC M/M/CORP PLS 38338	
11/2005	BIROSOAL ENGINEERING, INC.	
11/04	WILLIAM SCHINDLER, PLS 38338	
10/00	CME ASSOC M/M/CORP PLS 38338	
11/99	JOHN A STEFANI PE & ASSOCIATES	
10/98	CME ASSOC M/M/CORP PLS 38338	
12/97	RAYMOND E BORUP JR PLS 128	
1/87	CME ASSOC M/M/CORP PLS 38338	

TAX MAP
 TOWNSHIP OF MANALAPAN
 MONMOUTH COUNTY NEW JERSEY
 SCALE 1"=200' MARCH 1960

ORIGINAL BY: EDWARD A. BONUS- L.S. LIC. NO. 8317
 REVISED BY: JOHN J. STEFANI
 C.M.E. ASSOCIATES
 PE & L.S. NJ. LIC. NO. 24271